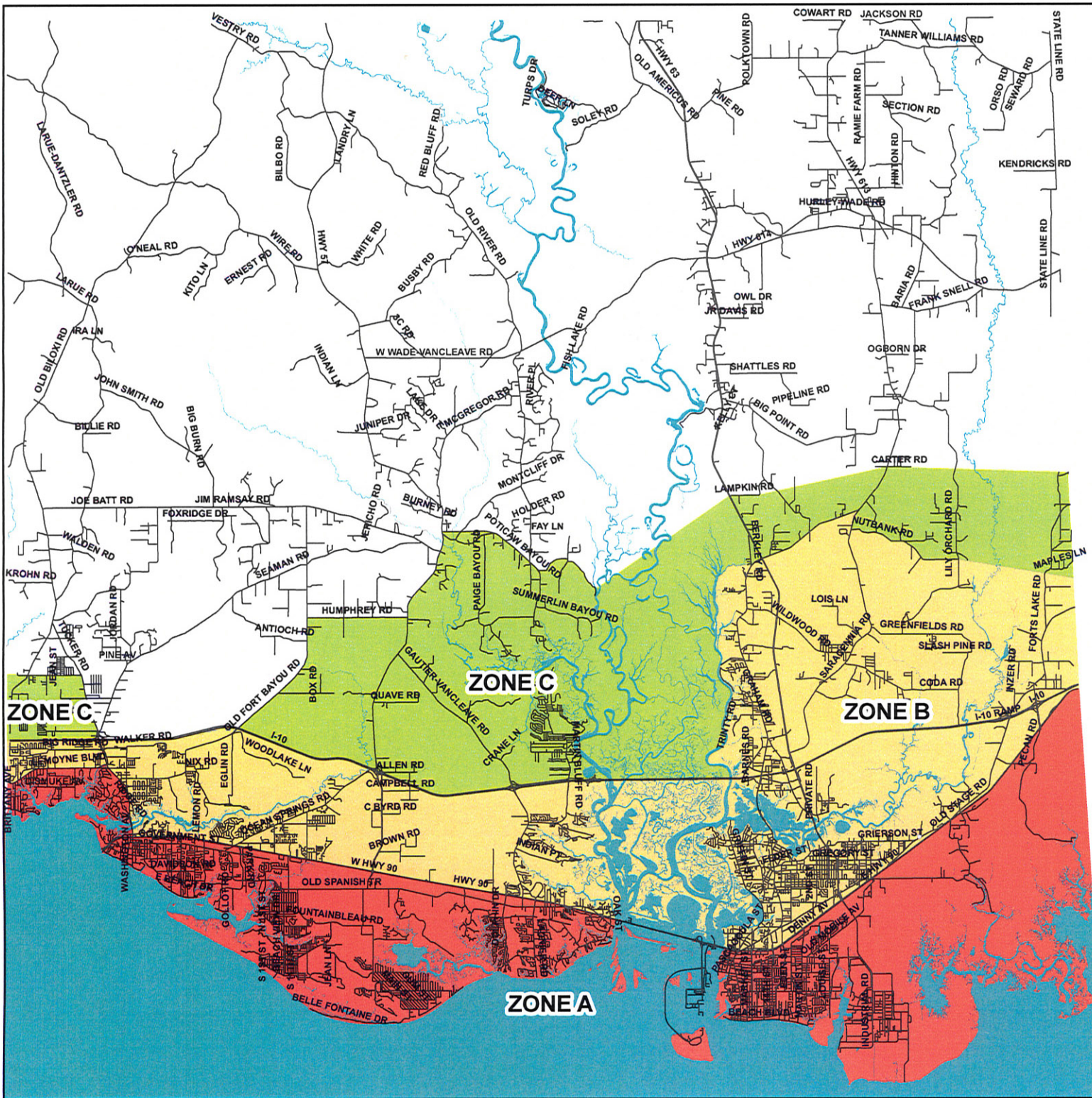


# JACKSON COUNTY 2010 HURRICANE EVACUATION ZONES A, B, AND C



— centerlines

■ waterpoly

2010\_EVACUATION\_ZONES

NAME

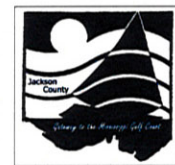
■ ZONE A

■ ZONE B

■ ZONE C

1:233,731

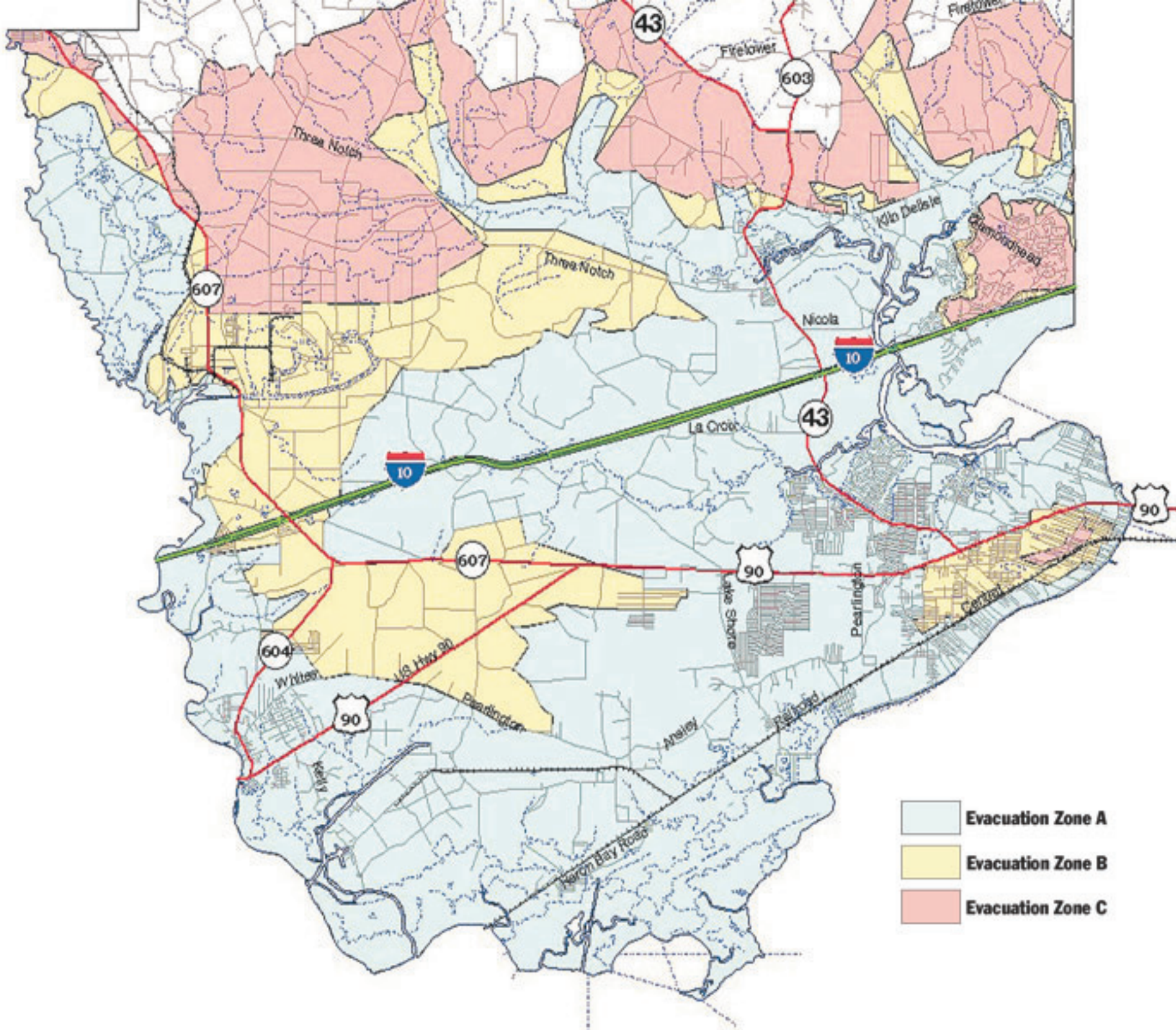
1 inch equals 19,477.618637 feet



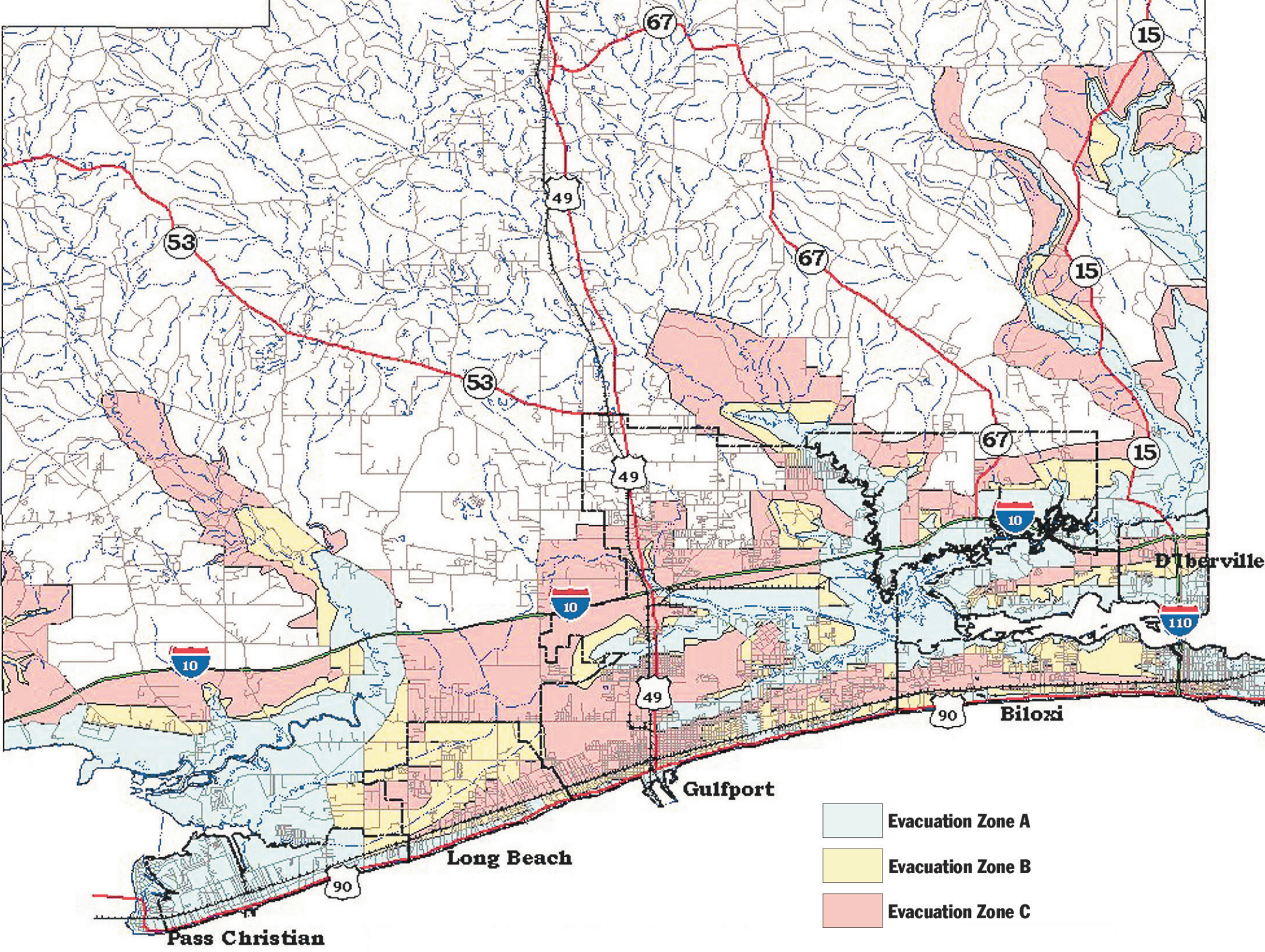
JACKSON COUNTY GIS DIVISION

Jackson County Information Systems, 02/26/10,  
Sources: Jackson County GIS, ...

Any user of data provided by Jackson County accepts its faults and assumes all responsibility for the use thereof, and further agrees to hold Jackson County harmless from and against any damage, loss or liability arising from any use of the data, or any product derived from this data. Every reasonable effort has been made to assure the accuracy of the maps and data provided. Nevertheless, some information may not be accurate. Users are cautioned to consider carefully the provisional nature of the maps and data before using it for decisions that concern personal or public safety or the conduct of business that involves monetary or operational consequences. Conclusions drawn from, or actions undertaken, on the basis of such maps and data, are the sole responsibility of the user.



- Evacuation Zone A
- Evacuation Zone B
- Evacuation Zone C



- Evacuation Zone A
- Evacuation Zone B
- Evacuation Zone C

Pass Christian

Long Beach

Gulfport

Biloxi

D'Iberville